

## RESEARCH OBJECTIVES

[Objectives](#) - [Study Area](#) - [Methodology](#) - [Data](#) - [Plan](#)

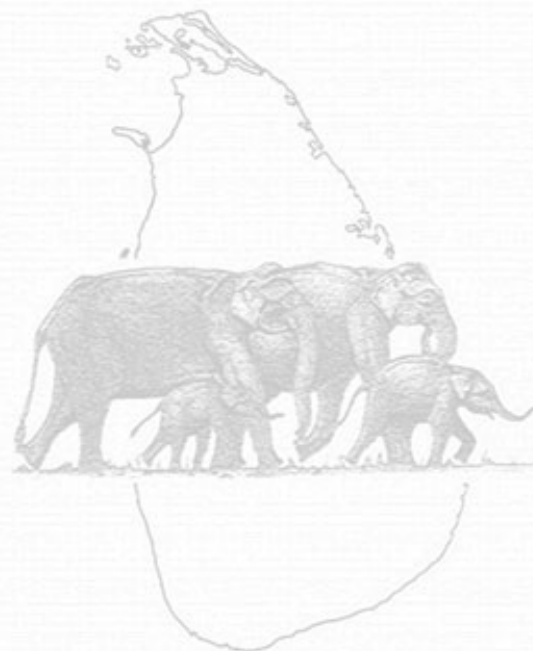
[Quarterly Report](#) - [Final Report](#)

Working on the assumption that the protection and management of elephants requires active community participation for sustainable conservation and human development, the main purpose of the work to be undertaken will be to gather data on HEC including an assessment of existing mitigation efforts if any and the strengths and weaknesses of these efforts, including information on efforts of various other CBOs, NGOs and GOs around the buffer zone areas of protected areas in the NWP. Hence the following broad objectives shall be researched into to assist the SLWCS in order to plan and implement better adaptive management strategies.

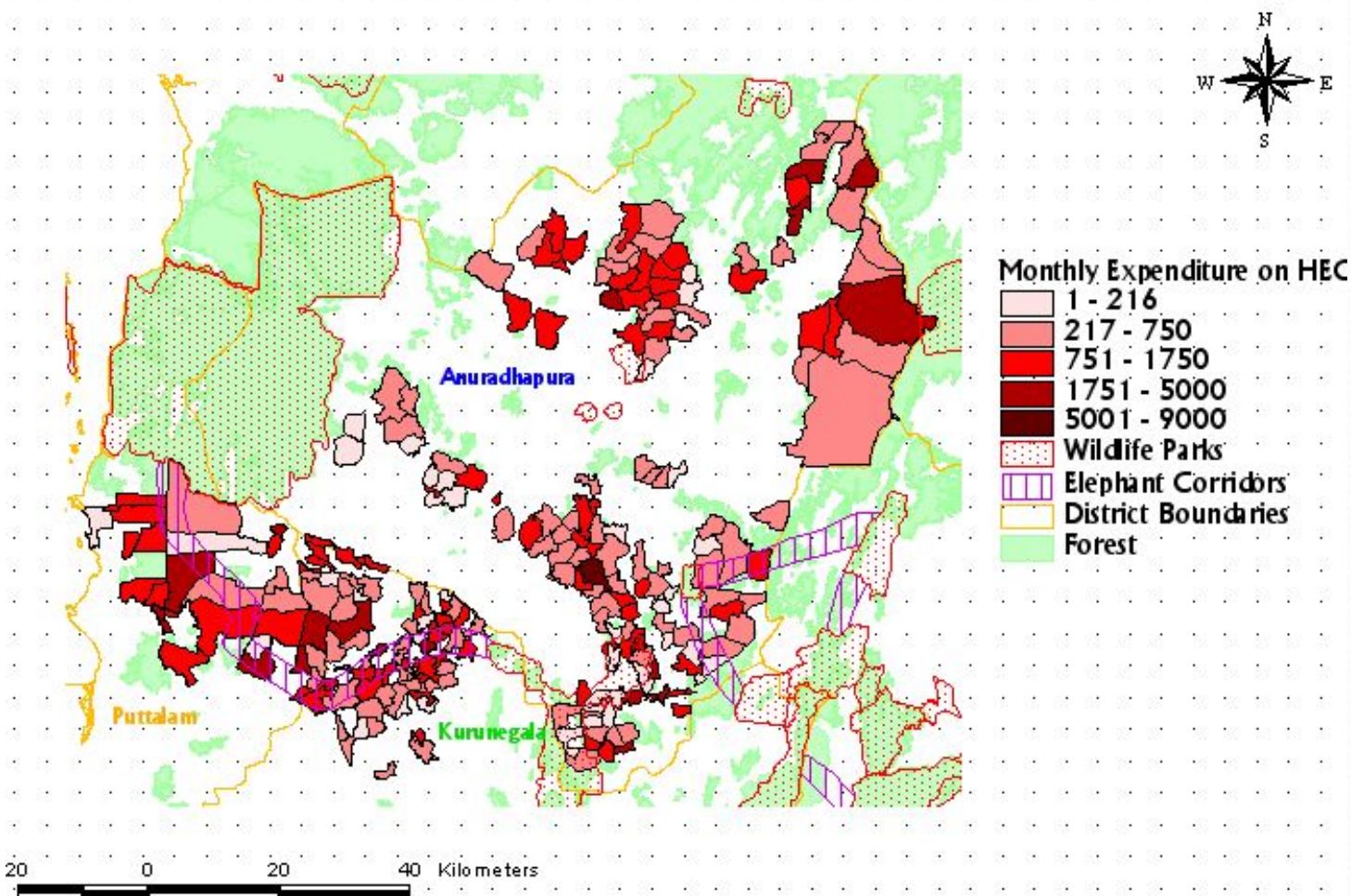
Hence the main research objectives will be to;

- Examine the frequency and intensity of conflict and the extent of crop and property damage
- Get recordings of elephant and human deaths in the last few years
- HEC in relation to seasonality and crop types
- Obtain feedback on the current perceptions of HEC in the area
- Highlight the current socio-economic status of villagers and mitigation efforts if any
- Collect GPS data to construct a basic GIS for GIS based analysis.

Sample GIS data appears below. Register for [FREE](#) to see details.



# Monthly Incomes spent on HEC Preventative Measures



[Objectives](#) - [Study Area](#) - [Methodology](#) - [Data](#) - [Plan](#)

[Quarterly Report](#) - [Final Report](#)

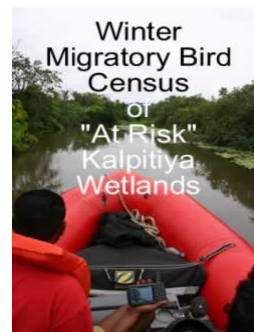
**Updates to SLWCS website**

• [Video](#) and [Image](#) Banks

• VOLUNTEERS NEEDED - [Winter Migratory Bird Census](#), [Elephant and Leopard Research and Teaching English](#)

• [Travel and Support Conservation](#)

[Video](#) and [Image](#) Banks



**VISION:** To help protect and conserve the diminishing biodiversity of Sri Lanka and to make the local and international community aware of its endangered status.

**MISSION:** To enable communities to balance ecosystem protection and economic development by pioneering a model for sustainable conservation.

(c)(r) 2006: Please acknowledge the "Sri Lanka Wildlife Conservation Society" if any material from this website is linked, transferred or published. Always refer to [www.SLWCS.org](http://www.SLWCS.org) in the quotation.



[Objectives](#) - [Study Area](#) - [Methodology](#) - [Data](#) - [Plan](#)

[Quarterly Report](#) - [Final Report](#)

## STUDY AREA

The study will take place in the North Western Region of Sri Lanka that covers two provinces the North Western and North Central. Three districts shall be covered during the field work, Anuradhapura , Puttalam and Kurunegala.

These areas are located in the low country dry zone of the country and receive less than 1700 mm of rainfall annually that lasts between November to February. The vegetation comprises of dry ever-green forests, moist deciduous forest and tropical thorn forests. The major tree species found are *Feronia Limonia*, *Manikara hexandra*, *Drypetes*, *Sepiaria* and *Pterospermum canescens*. The moist deciduous forest has species such as *Chloroxylon swetenia*, *Vetex pinnala* and *Spinum insigne*. Tropical forest is mostly in the western region of the North West Province whereas the ever-green forest is found in the area adjacent to tropical thorn forest and the moist deciduous forests are found in areas around Anuradhapura , Madawachhiya, Ritigala and Harbarana.

[Objectives](#) - [Study Area](#) - [Methodology](#) - [Data](#) - [Plan](#)

[Quarterly Report](#) - [Final Report](#)

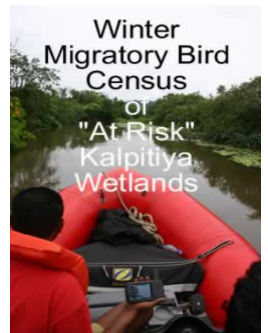
### Updates to SLWCS website

• [Video](#) and [Image](#) Banks

• VOLUNTEERS NEEDED - [Winter Migratory Bird Census](#), [Elephant and Leopard Research and Teaching English](#)

• [Travel and Support Conservation](#)

[Video](#) and [Image](#) Banks



**VISION:** To help protect and conserve the diminishing biodiversity of Sri Lanka and to make the local and international community aware of its endangered status.

**MISSION:** To enable communities to balance ecosystem protection and economic development by pioneering a model for sustainable conservation.

(c)(r) 2006: Please acknowledge the "Sri Lanka Wildlife Conservation Society" if any material from this website is linked, transferred or published. Always refer to [www.SLWCS.org](http://www.SLWCS.org) in the quotation.



[Objectives](#) - [Study Area](#) - [Methodology](#) - [Data](#) - [Plan](#)

[Quarterly Report](#) - [Final Report](#)

## RESEARCH METHODOLOGY

Based on preliminary meetings with members of SLWCS and the Department of Wildlife Conservation (DWC) that included the Assistant Director for the North West Region, 1 Beat and Range officer, along with reviewing DWC documents for the region, it was felt appropriate that the research methodology for the six months of project work should be based on a combination of primary and secondary research. “Secondary Data” from DWC that is available for the region (in Sinhalese) will be collected and processed for 3 Districts in the North West Region i.e. Anuradhapura, Puttalam and Kurunagala where high HEC exists. This data obtained will include information on elephant raiding, human elephant deaths, damages to property and compensations paid to victims for the years 2000 to 2003, the data will be analyzed in a basic GIS program and shall be complemented with the findings of the field work. The “Primary Data” will include aspects of socio-economic conditions, grass-root community based initiatives and willingness to address problems related to HEC, thoughts, perceptions and existing methods to mitigate HEC, and levels of participation and challenges that go with it.

Hence the results of this report will enable us to examine the situation both at a macro and micro level, the former will give us a general picture of HEC in three Districts and the latter will focus on community level initiatives and efforts to mitigate the problem.

The unit of analysis will be at ‘village level’. That is to say in each village the head-man, or a leader whether an official government representative (*Gramaniladari/Gramaseveka*) or a representative from village based societies shall be interviewed and will be the main respondents. Additionally if one village has more than 3 sub-villages, then more than one respondent shall be interviewed.

Selection and sample of villages has been based on the HEC data obtained from the Department of Wildlife Conservation for the years 2001 to 2003. The numbers of HEC reports were noted for each D.S. Division and from within these Divisions, G.N. Divisions (that has an average of 2 sub-villages) are selected as the study sample. The coverage will be at-least 50% from each D. S. Division. Given below is a table of the Districts, D.S. Divisions and the G.N. Divisions that shall be covered in this survey.

Sri Lanka’s Primary Administrative Divisions consist of 25 main districts; these districts are further sub-divided into 324 Divisional Secretary Divisions (D.S. Divisions). The selection of D.S. Divisions in the three districts was done through data obtained from the Department of Wildlife Conservation. Having identified the D.S. Divisions where the conflict is high, the purpose of the initial field trip was to go to each of these high conflict divisions to further inquire about the G.N Divisions (within the D.S. Divisions) that would have to be covered in the study sample. The Divisional Secretariat Officers were in all cases helpful and assisted the research team to identify the *Grama-Niladari* Divisions (G.N. Divisions) where the *Grama-Niladari*’s from each village will be interviewed. G.N. Divisions are the smallest administrative units and on average consist of 2 to 3 villages. The overall research sample coming to a total of approximately 250 to 300 respondents at the end of the six month period.

[Objectives](#) - [Study Area](#) - [Methodology](#) - [Data](#) - [Plan](#)

[Quarterly Report](#) - [Final Report](#)

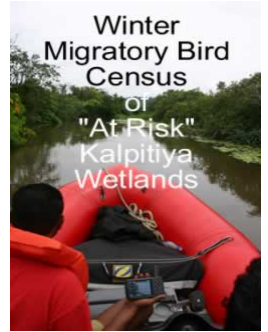
### Updates to SLWCS website

[Video](#) and [Image](#) Banks

- [Video](#) and [Image](#) Banks

- VOLUNTEERS NEEDED -[Winter Migratory Bird Census](#), [Elephant and Leopard Research and Teaching English](#)

- [Travel and Support Conservation](#)



**VISION:** To help protect and conserve the diminishing biodiversity of Sri Lanka and to make the local and international community aware of its endangered status.

**MISSION:** To enable communities to balance ecosystem protection and economic development by pioneering a model for sustainable conservation.

(c)(r) 2006: Please acknowledge the "Sri Lanka Wildlife Conservation Society" if any material from this website is linked, transferred or published. Always refer to [www.SLWCS.org](http://www.SLWCS.org) in the quotation.



[Objectives](#) - [Study Area](#) - [Methodology](#) - [Data](#) - [Plan](#)

## [Quarterly Report - Final Report](#)

PROCESSED GIS DATA ((c)2005 STRICT Copyright, SLWCS -written authorization required for use)

1. [Sample DSD Divisions](#)
2. [HEC zones](#)
3. [Monthly Income levels](#)
4. [Elephant Deaths](#)
5. [Human Deaths](#)
6. [Home Damages.](#)

((c)2005 STRICT Copyright, SLWCS -written authorization required for use)

## RESEARCH DATA

Table 1.

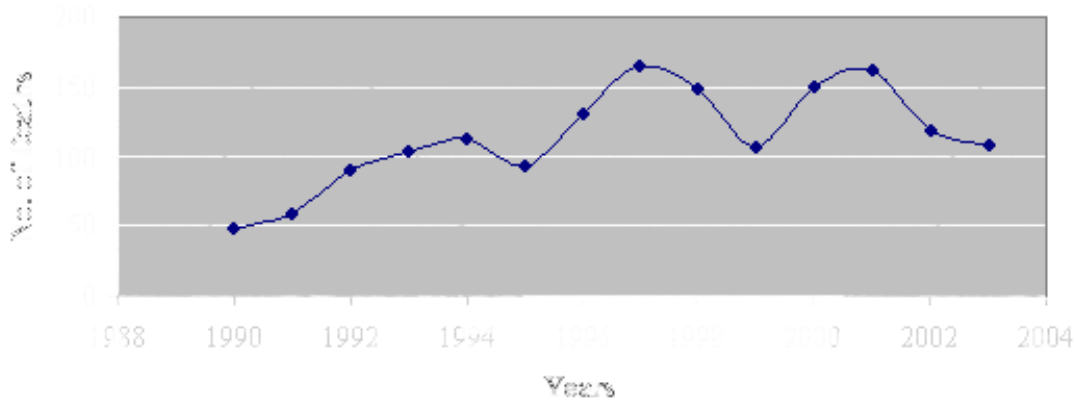
Primary Administrative Divisions	D.S. Divisions to be covered	Total G.N. Divisions under each D.S. Division	No. of G.N Divisions selected	% Of selected sample G.N. Divisions
<b>1. Anuradhapura</b>	Palugaswewa	16	8	50 %
	Palagala	34	16	50 %
	Mendawachchiya	37	<b>16</b>	<b>43 %</b>
	Nochiagama	36	<b>14</b>	<b>39 %</b>
	Ipalogama	32	<b>11</b>	<b>34 %</b>
	Kekirawa	53	26	50 %
	Rambewa	38	19	50 %
	Trippane	41	20	50 %
	Talawa	40	<b>18</b>	<b>45 %</b>
<b>2. Kurunegala</b>	Horrowpothana	38	19	50 %
	Galgamuwa	61	<b>27</b>	<b>44 %</b>
	Ambanpola	28	14	50 %
<b>3. Puttalam</b>	Giribawa	35	18	50 %
	Vanathavilluwa	17	8	50 %
	Karuwalagaswewa	26	13	50 %
	Nawagathegama	19	10	50 %
<b>TOTAL</b>			<b>257</b>	

Information gathered from the Department of Wildlife Conservation, Sri Lanka, December 2004

Table 1.

### Research Deaths (1990-2003)

(Department of Wildlife, Sri Lanka)



### Research Deaths In The Years 1990-2003 In Months

(Department of Wildlife, Sri Lanka)

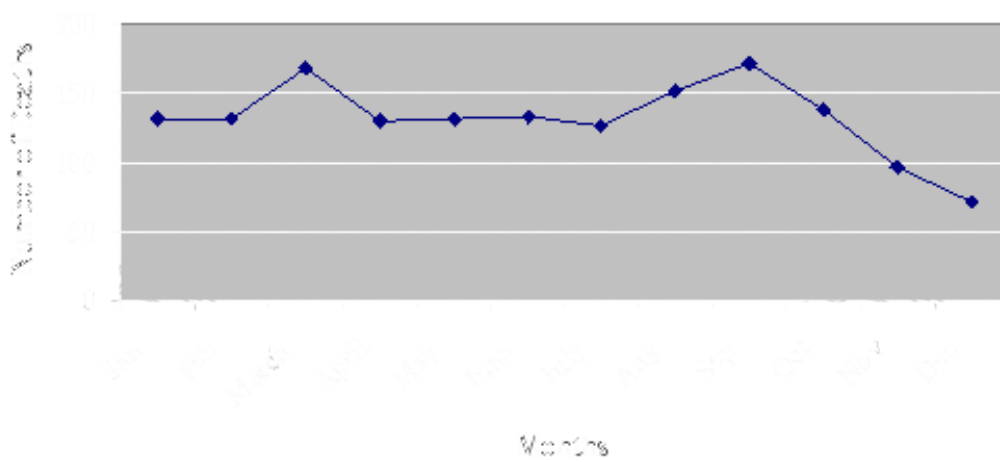
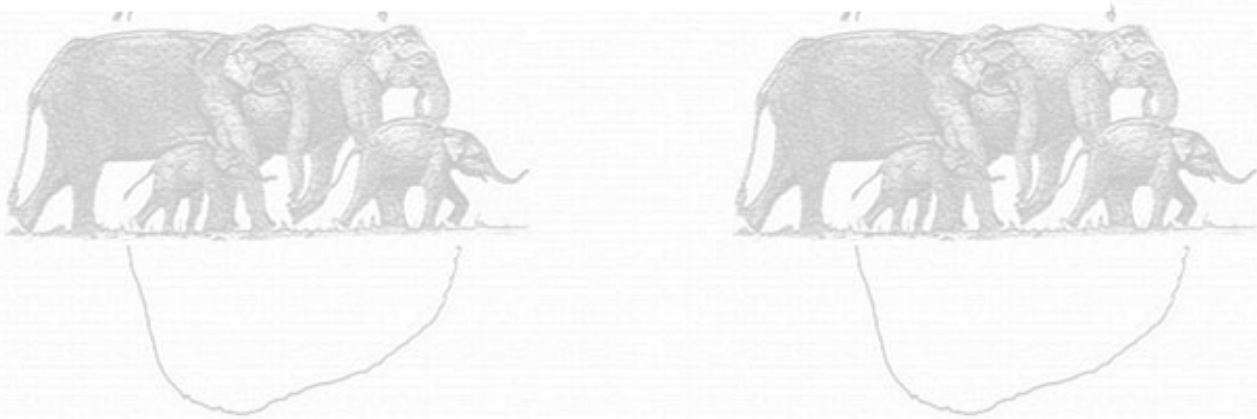
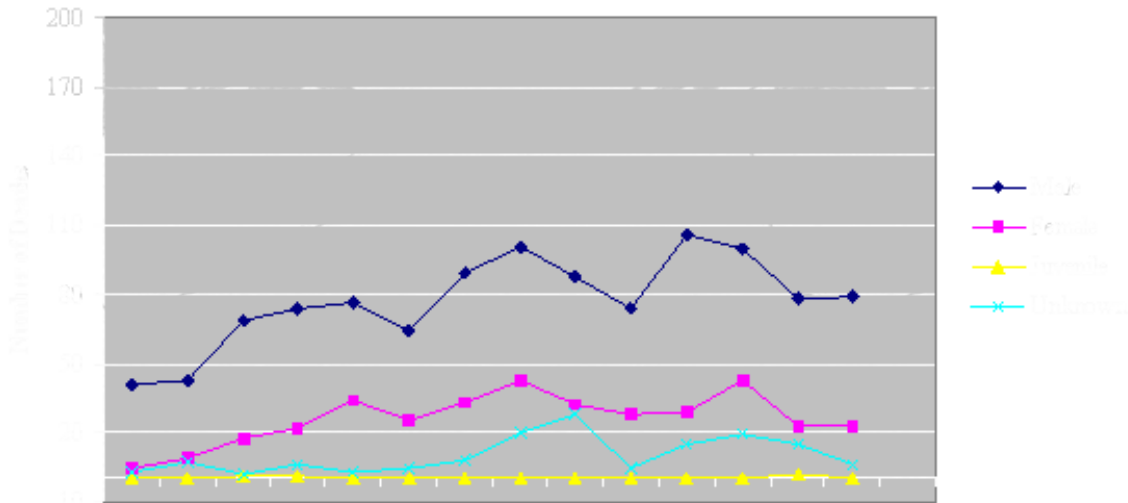


Table 2.





Recorded Migrant Birds in Sri Lanka  
Department of Wildlife, Sri Lanka



[Objectives](#) - [Study Area](#) - [Methodology](#) - [Data](#) - [Plan](#)

[Quarterly Report](#) - [Final Report](#)

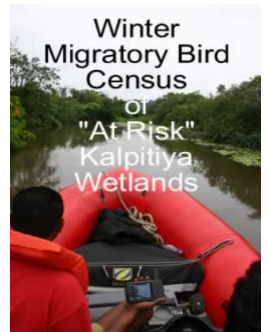
**Updates to SLWCS website**

• [Video](#) and [Image](#) Banks

• VOLUNTEERS NEEDED - [Winter Migratory Bird Census](#), [Elephant and Leopard Research](#) and [Teaching English](#)

• [Travel and Support Conservation](#)

[Video](#) and [Image](#) Banks



**VISION:** To help protect and conserve the diminishing biodiversity of Sri Lanka and to make the local and international community aware of its endangered status.

**MISSION:** To enable communities to balance ecosystem protection and economic development by pioneering a model for sustainable conservation.

(c)(r) 2006: Please acknowledge the "Sri Lanka Wildlife Conservation Society" if any material from this website is linked, transferred or published. Always refer to [www.SLWCS.org](http://www.SLWCS.org) in the quotation.